



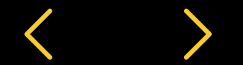
# Premier One-Stop Tensile Fabric Solutions in China

IT'S NICE TO MEET YOU

**SKY**  
**TENSILE**



[WWW.SKYTENSILE.COM](http://WWW.SKYTENSILE.COM)  
Shenzhen.China







# About SkyTensile

## Innovating the world

SkyTensile is the premier one-stop tensile fabric solutions provider in China, delivering top-quality PTFE, PVC, PVDF, ETFE, and other membrane structure solutions. Headquartered in Shenzhen, our expert team from leading national design institutes operates a state-of-the-art 5,000-square-meter manufacturing facility.

With over a decade of experience, SkyTensile has completed more than 1,000 tensile membrane structure projects worldwide, serving public spaces, schools, real estate, banks, transportation, commercial centers, and eco-resorts. We offer an extensive range of premium fabric materials and are proud to have installed over 400,000 square meters of structures globally.

SkyTensile is committed to delivering sustainable, innovative, and quality solutions to our global clients.







# 400,000+

400,000+ square meters of structures  
installed globally

## 10+

10+ years of industry experience

## 1,000+

1,000+ projects completed  
worldwide

## 5,000+

5,000+square meter state-of-  
the-art manufacturing facility





# Why choose SkyTensile



COST EFFECTIVE



100%  
SATISFACTION  
GUARANTEED



20 YEARS  
WARRANTY



## Innovation & Quality Commitment

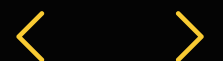
SkyTensile patented technology ensures cost-effective solutions without compromising quality. Our engineering and design teams continuously enhance our products through continuous improvement processes, delivering energy and cost savings to our clients.

## Professional & Efficient Solutions

SkyTensile experienced team provides one-stop solutions, ensuring high-quality and efficient services from concept to completion. With our top-notch facilities, professional designers, and dedicated service team, we guarantee fast delivery and timely project completion, effectively meeting all customer needs.

## Environmental Sustainability

SkyTensile is dedicated to sustainable design and materials. Our membrane materials ensure durability, recyclability, and minimal environmental impact. We focus on energy efficiency, reducing waste and our carbon footprint. Our eco-friendly designs integrate with the natural environment, promoting harmony and reducing ecological impact.





# OUR SERVICES

SkyTensile provides comprehensive tensile membrane structure solutions, expertly managing your project from concept to completion.

We are committed to every project with dedication and prompt, courteous communication throughout all stages—initial inquiry, design, manufacturing, shipping, and installation.

Experience elegant designs, competitive pricing, and exceptional service tailored to your needs.







# OUR SERVICES



## Design

SkyTensile expert team, drawn from leading national design institutes, starts with your initial idea or concept. We leverage our expertise to develop the most efficient and cost-effective design.

## Engineering

Each project is certified by our experienced architects and engineers. All outputs are checked against relevant standards to ensure safety, feasibility, and long-term reliability.

## Manufacturing

Operating from our 5,000 square meter in-house facility, we leverage extensive experience handling complex projects, enabling us to tackle any scale and technical requirement with flexibility.

## Installation

SkyTensile certified installation team, skilled in handling complex tensioned fabric structures, provides on-site guidance to ensure your vision is perfectly realized. Our installation process is meticulously planned, with rigorous quality control and safety measures to meet the highest standards.



# OUR PRODUCTS

SkyTensile offer an extensive range of premium fabric materials and are proud to have installed over 400,000 square meters of structures globally.



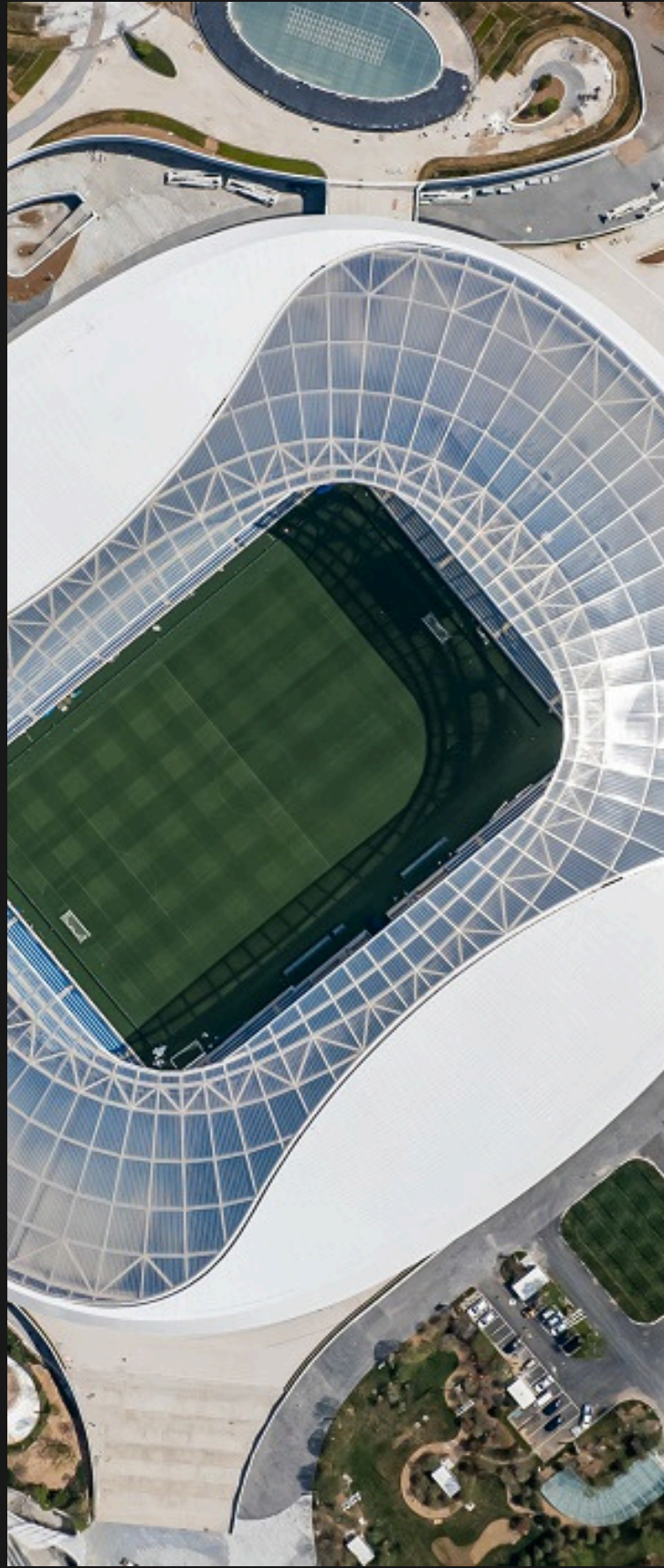
**-PTFE**

**-PTFE**

**-PVC/PVDF**







# -ETFE

ETFE is a transparent film made from a copolymer of ethylene and tetrafluoroethylene, with an elongation rate of 420%-440%. Its light transmission is similar to glass, earning it the nickname "soft glass."

## Types and Thickness:

Available in transparent, matte, colored, and dotted varieties.

Common thicknesses are 150 $\mu$ m, 200 $\mu$ m, 250 $\mu$ m, and 300 $\mu$ m, with 250 $\mu$ m and 300 $\mu$ m being the most used.

Can be used in single-layer or multi-layer cushion systems.

## Main Benefits:

- **Durability:** Lasts 25-35 years, weather-resistant, maintains strength and transparency, recyclable.
- **Heat Resistance & Safety:** Fire rating B1 and DIN 4102, does not drip when burning.
- **Light Transmission:** Up to 95%, ideal for solar protection and agriculture, printable to reduce to 50%.
- **Non-Stick & Anti-Fouling:** Resists dirt, easy to clean with rainwater.
- **Chemical Resistance:** Inert to strong acids and bases.



# -ETFE







-ETFE



# -PTFE

PTFE membrane material is a composite made of fiberglass with a PTFE (polytetrafluoroethylene) coating.

PTFE absorbs light, especially UV rays, and gets whiter with exposure (the more sun, the whiter it gets).

## Applications:

Commonly used in large public buildings and commercial plazas, like roofs or facades of airports, train stations, stadiums, ventilated facade screens and urban landscapes.

## Main Benefits:

- Lightweight: Less than  $1.5 \text{ kg/m}^2$ , much lighter than traditional materials.
- Strong: The strongest textile, even stronger than steel wire of the same diameter.
- Flexible: Can be stretched into dynamic, complex shapes.
- Light-Transmitting: Provides soft, diffused light.
- Self-Cleaning: Rain easily washes away dirt due to its non-stick surface.
- Inert Surface: Resists mold and acid rain.
- Weldable: Can be welded into large, strong canopies.
- Long-Lasting: Minimal degradation, lasts at least 25 years, considered permanent.
- Fire Resistant: Rated B1, with some parts reaching A2.

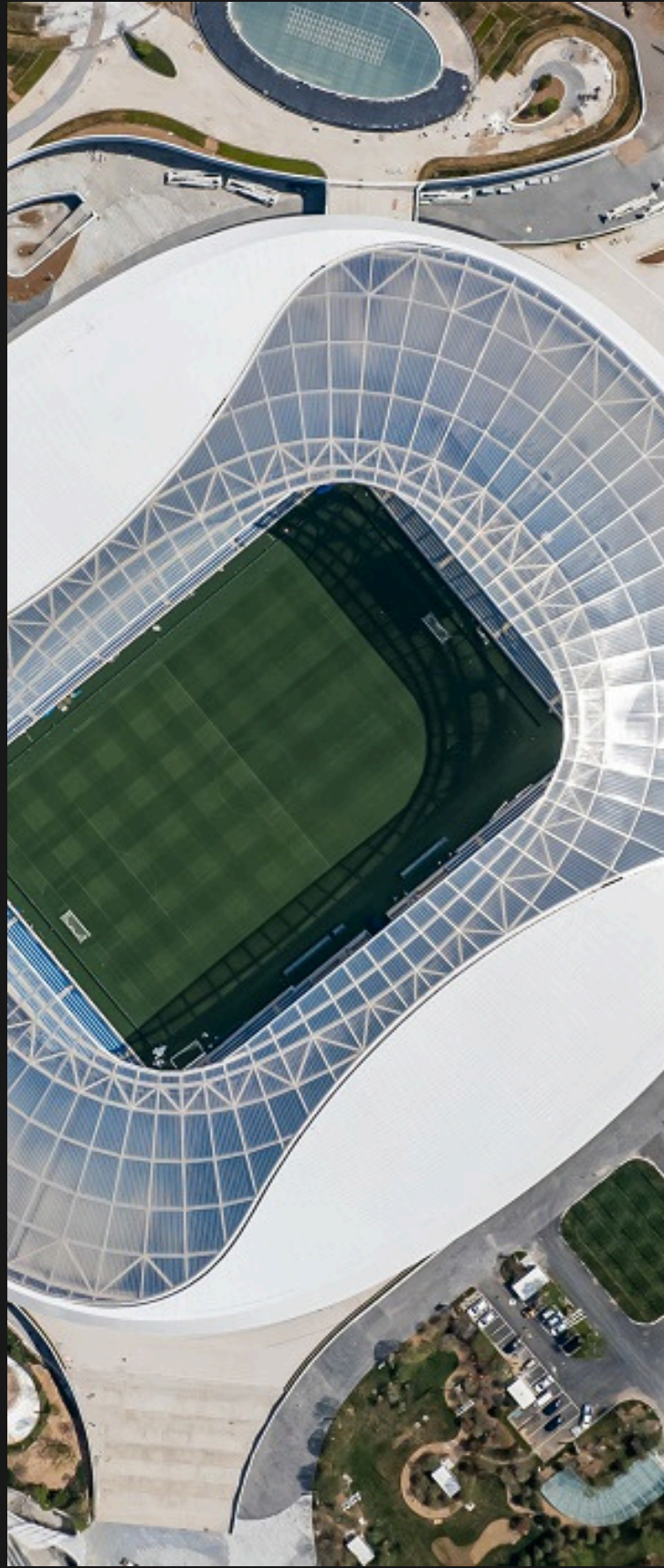






-PTFE





# -PVC/PVDF

PVC membrane material includes a base fabric, PVC coating, and surface treatments like acrylic, PVDF, or nano titanium dioxide.

PVDF membrane is a high-end material combining PVC's flexibility and ease of processing with PTFE's durability and self-cleaning properties.

## **PVC Main Benefits:**

**Lifespan:** Lasts 7-15 years. PVDF enhances self-cleaning and durability.

**Self-Cleaning:** Titanium dioxide coating ensures excellent self-cleaning, UV, and corrosion resistance.

**Fire Safety:** Forms a melting hole without igniting in a fire, classified as B1 flame retardant.

## **PVDF Main Benefits:**

**Durable:** Lasts over 15 years with excellent weather resistance and anti-fouling properties.

**Flexible:** Easy to fold and process like PVC.

**Heat Resistant:** Withstands high temperatures well.

**Anti-Cracking:** Resists cracking for long-term reliability.

**Cost-Effective:** Offers high performance at a competitive price.

**Quick Production:** Fast to produce and install.





-PVC/PVDF







# OUR PROJECTS

SkyTensile has completed more than 1,000 tensile membrane structure projects worldwide.



**-Stadiums**  
**-Building Envelopes**

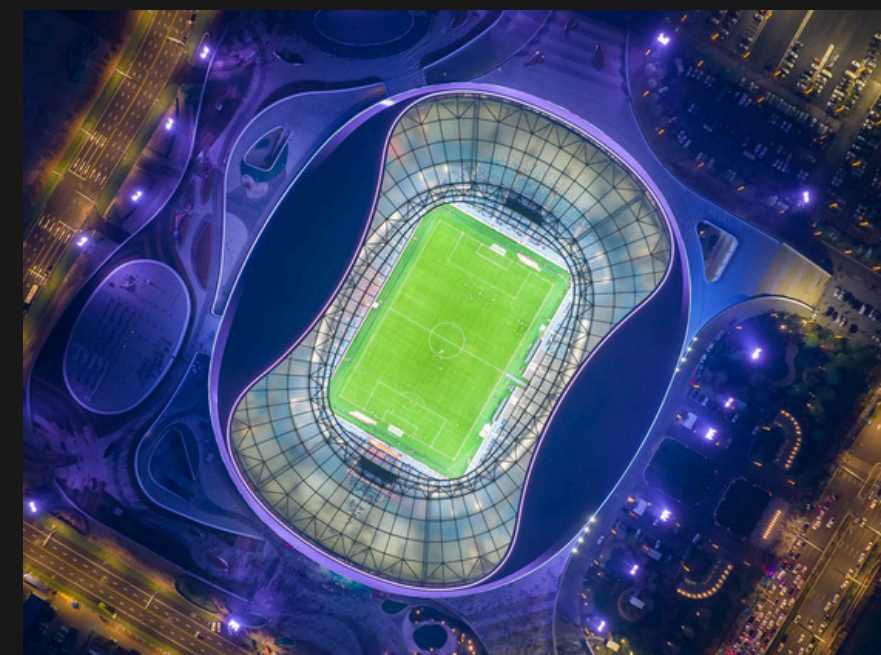
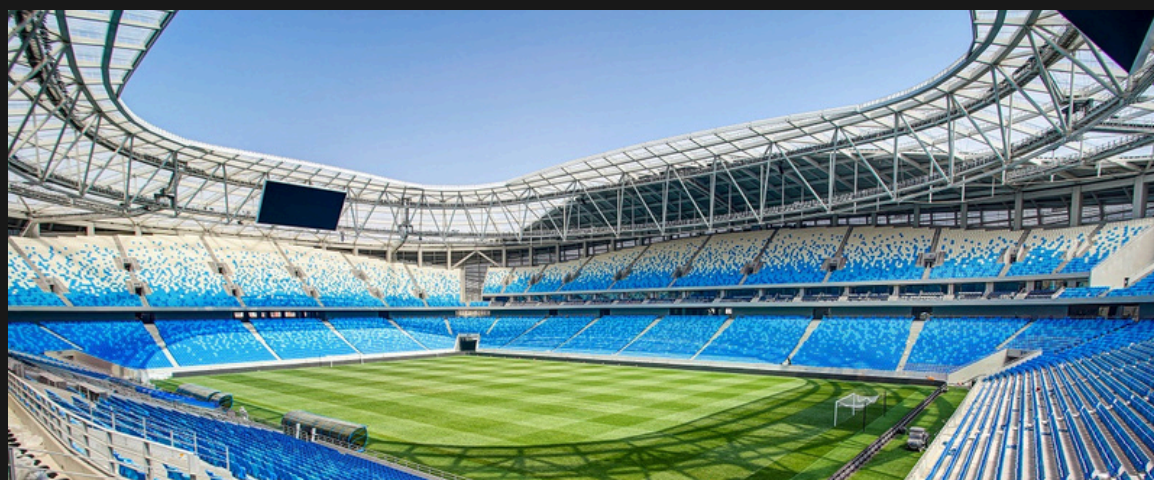
**-Transportation**  
**-Airport Canopies**

**-Industrial**  
**-Amphi theaters**





# Qingdao Football Stadium



Location address: Qing Dao.China

**Fabric Type : ETFE**

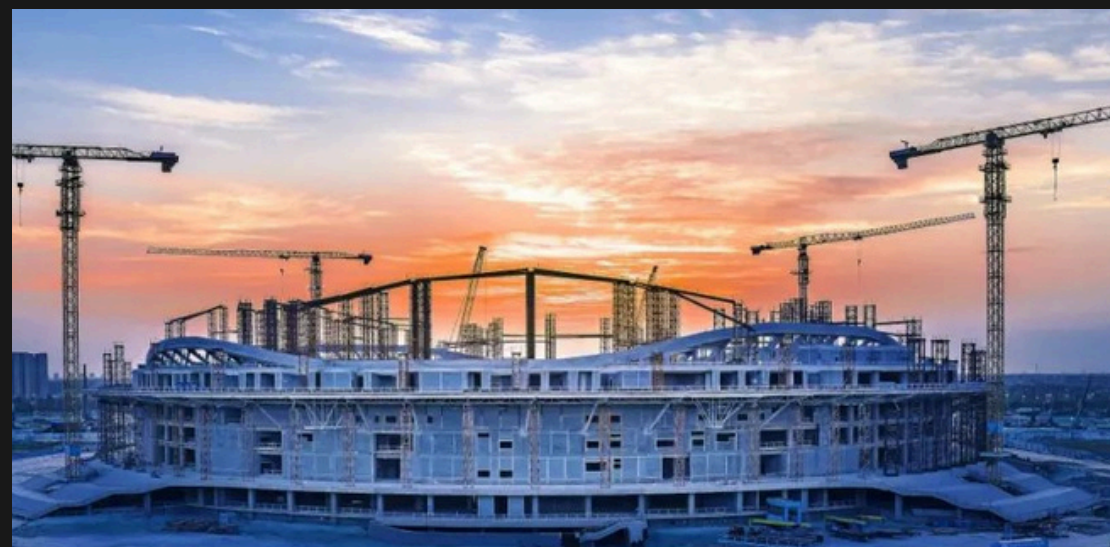
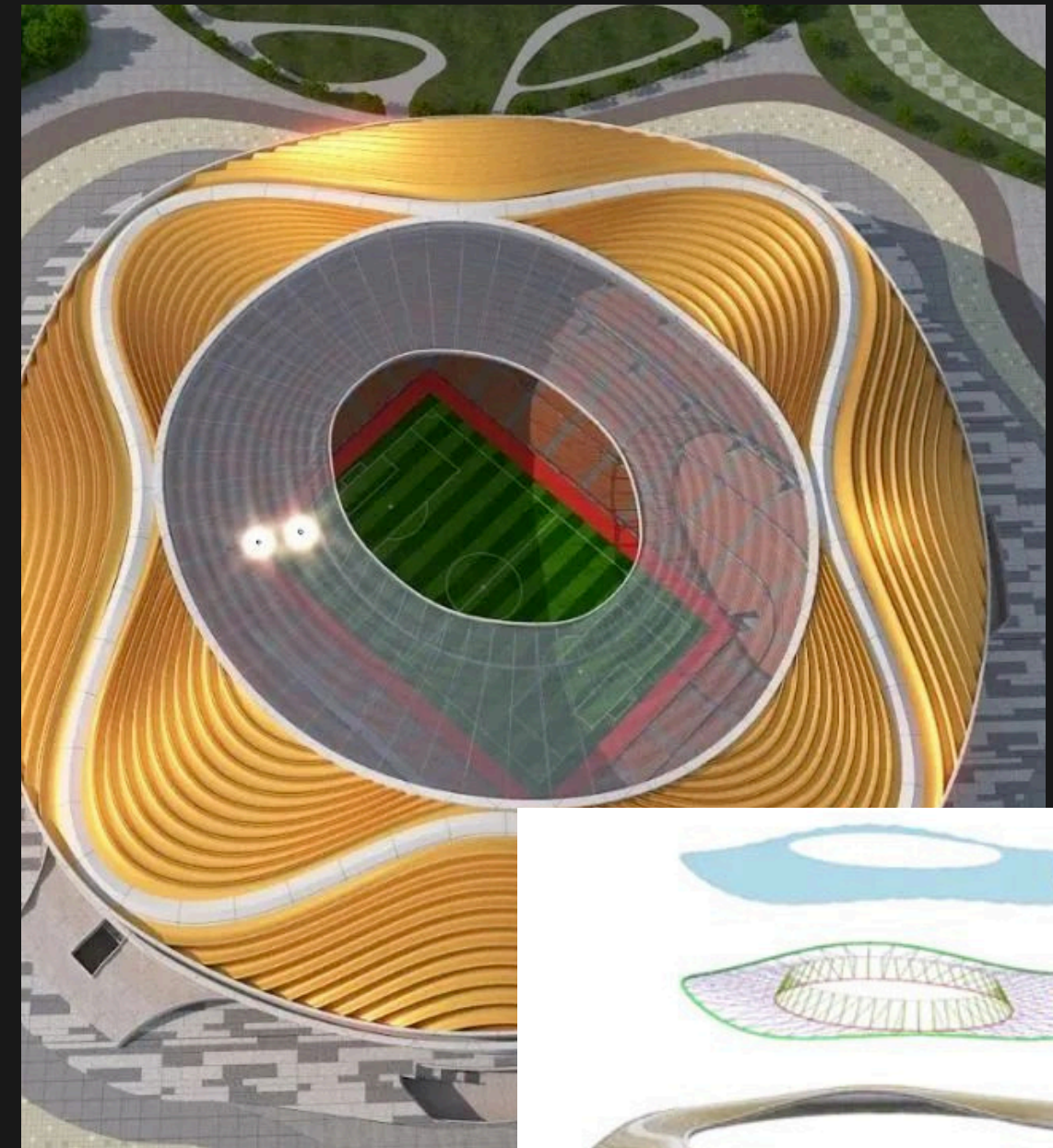
Project Size: 23687 sqm

Completion Date:2023





# The Yellow River Sports Center's professional football stadium



Location address: Ji Nan China

**Fabric Type : ETFE**

Project Size: 100000 sqm

Completion Date: 2012





# Jing shan International Tennis Center



Location address: Jing shan .Hu Bei .China

**Fabric Type : PTFE**

Project Size: 22800 sqm

Completion Date:2016



# Yue Yang Airport



Location address: Yue Yang .China

**Fabric Type : PTFE**

Project Size: 8000 sqm

Completion Date:2017







# Fangcaodi Resort



Location address: Gui Zhou. China

**Fabric Type : PVDF**

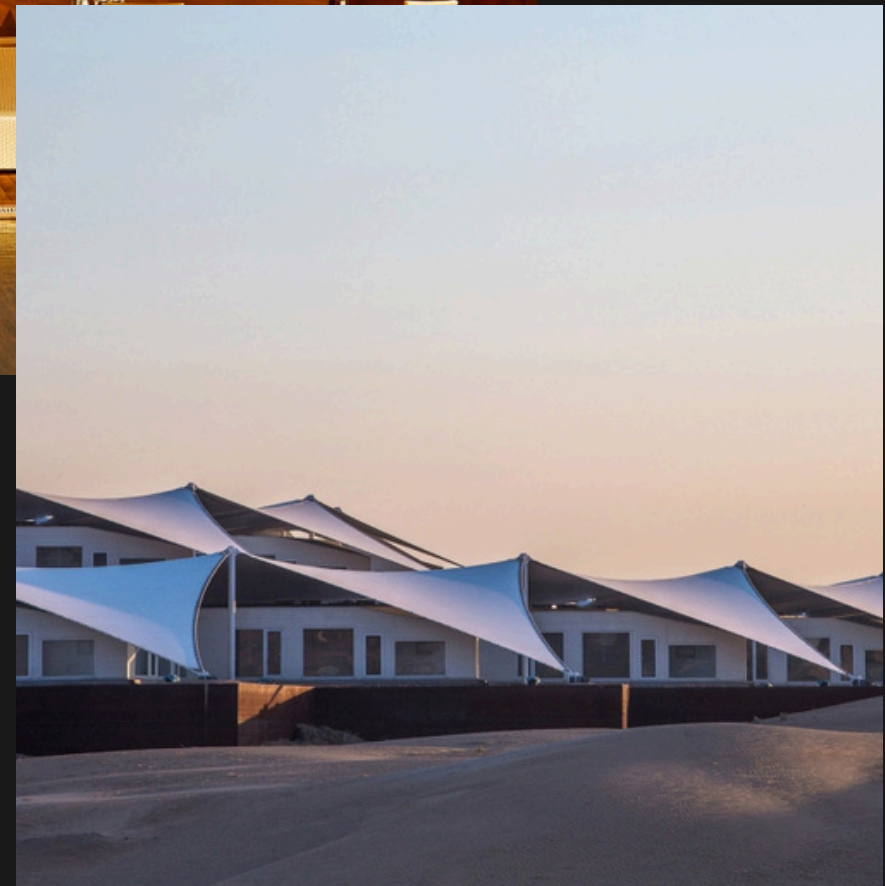
Project Size: 5791 sqm

Completion Date:2004





# Lotus Hotel Ordos City China



Location address: Ordos City China

**Fabric Type :PVC**

Project Size: 40000 sqm

Completion Date:2013



# OUR FACTORY

Operating from our 5,000 square meter in-house facility, SkyTensile leverages extensive experience and advanced equipment, including membrane inspection machines, automatic cutting machines, ETFE film fusion machines, and welding machines for PVC/PVDF and PTFE membranes.

**-5,000 Square Meter In-house Facility**

**-Advanced Equipment**







# Our Factory





# Project Process

## Initial Cooperation Phase

1.Customer Inquiry

2.Requirements Communication

3.Concept Sketch

4.Contract Signing & Deposit

## Design & Engineer & Manufacturing Phase

5.3D Modeling

6.BIM Modeling

7.Architectural Design

8.Load Analysis

9.Wind Tunnel Testing

10.Construction Simulation

11.Membrane Cutting Analysis

12.Manufacturing Drawings

14.Steel Structure Fabrication

15.Membrane Fabrication

16.Installation Testing

17.Packaging

## Handover Phase

18.Final Payment

19.Shipping & Delivery

20.Foundation Construction

21.Installation & Project Handover





# Contact us for More

## Questions? Comments? Concerns?

Contact us to discuss anything you'd like, or simply drop a line to say hi. We always welcome the opportunity.



### Phone

+123-456-7890

### Email

hello@reallygreatsite.com

### Online

reallygreatsite.com